

PARTNERSHIPS

IN PALLIATIVE AND END OF LIFE CARE (PEOLC) IN ALBERTA

WHAT IS PEOLC?



PEOLC IS A CONTINUUM OF CARE FROM THE TIME OF DIAGNOSIS OF A LIFE-LIMITING ILLNESS THROUGH TO THE TIME OF DEATH AND INTO BEREAVEMENT.

PEOLC PARTNERS ARE WORKING TOGETHER SO ALL ALBERTANS RECEIVE THE BEST POSSIBLE PEOLC WHERE THEY LIVE.

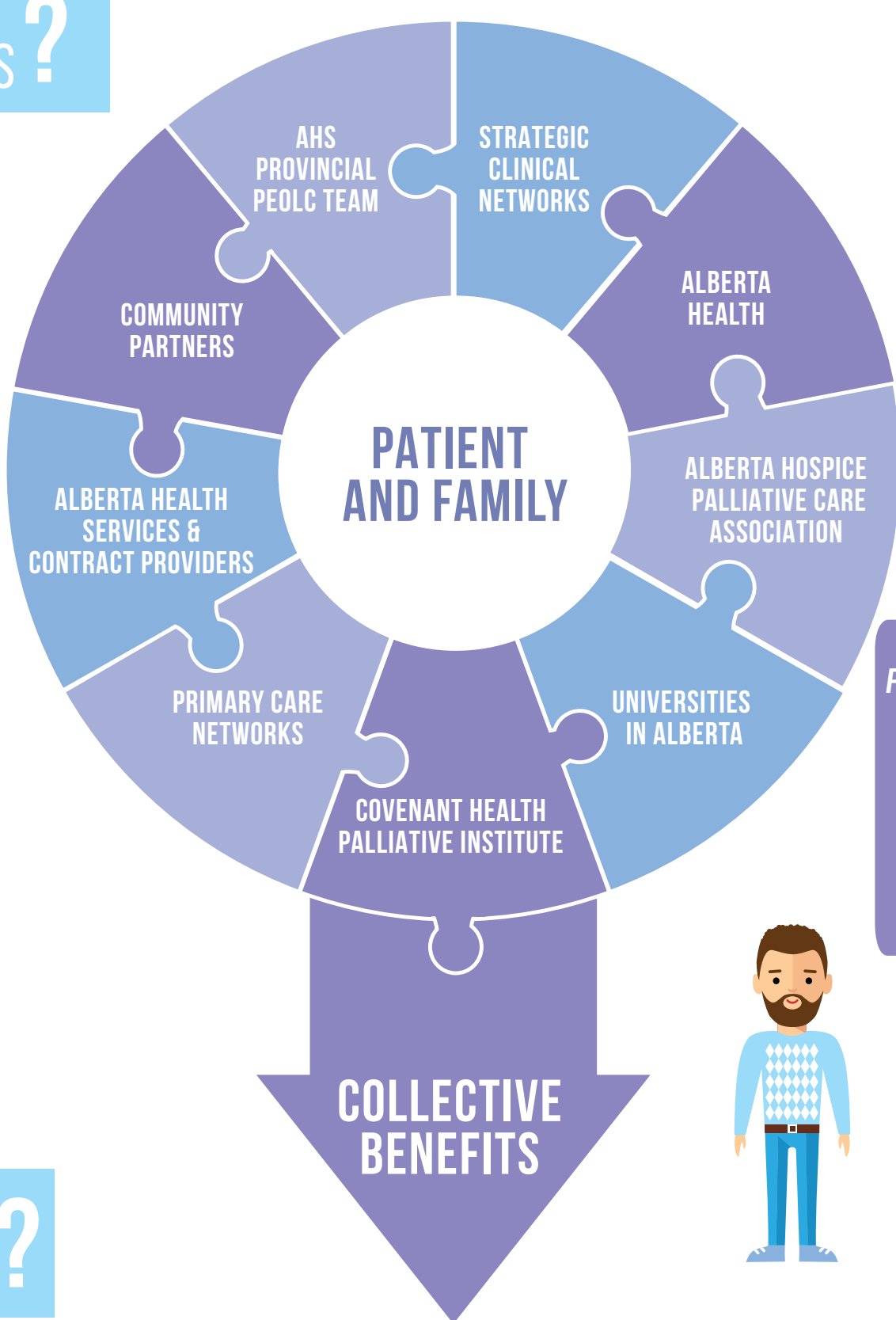
9/10



ALBERTANS WILL REQUIRE SOME DEGREE OF PEOLC IN THEIR LIFETIME.



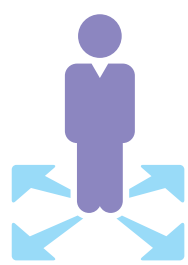
WHO ARE THE PARTNERS?



WHEN PARTNERS WORK TOGETHER, THEY CAN ACCOMPLISH MUCH MORE THAN EACH WOULD ON THEIR OWN.



WHAT ARE THE BENEFITS?



MEETING PATIENT'S NEEDS FASTER



QUALITY PEOLC OF PATIENT AND FAMILY



AWARENESS & INFORMATION



SHARED RESOURCES



PLANNING AHEAD TOGETHER



SUSTAINABLE PROGRAMS AND PRACTICES

POSITIVE RESULTS!



PEOLC ALBERTA PROVINCIAL FRAMEWORK



ADULT PEOLC WEBSITE



PEDIATRIC PEOLC WEBSITE



EMS PEOLC ASSESS, TREAT AND REFER PROGRAM



24/7 PROVINCIAL ON-CALL PALLIATIVE PHYSICIAN SUPPORT



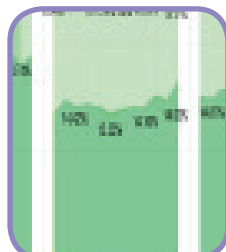
CLINICAL GUIDELINES



COMMUNITY SUPPORTS



VOLUNTEER NETWORK SUPPORT



DASHBOARD



PROVINCIAL BEREAVEMENT SERVICES SUPPORT

COMMUNITY INVOLVEMENT IS VITAL TO INCREASING ACCESS AND IMPROVING QUALITY OF PEOLC FOR ALL ALBERTANS.

ADVANCE CARE PLANNING | GOALS OF CARE
CONVERSATIONS MATTER
A GUIDE FOR MAKING HEALTHCARE DECISIONS



FOR MORE INFORMATION VISIT [HTTPS://MYHEALTH.ALBERTA.CA/PALLIATIVE-CARE](https://myhealth.alberta.ca/palliative-care) OR [WWW.CONVERSATIONSMATTER.CA](http://www.conversationsmatter.ca)