



PEOLC Palliative & End-of-Life Care

Working together for Albertans

WHAT IS PEOLC?



PEOLC is a range of care from the time of diagnosis of a life-limiting illness until the time of death and into bereavement.



of life-limiting illness. Palliative Care starts at the time of diagnosis.

focuses on helping the patient be comfortable, with the best quality of life possible.

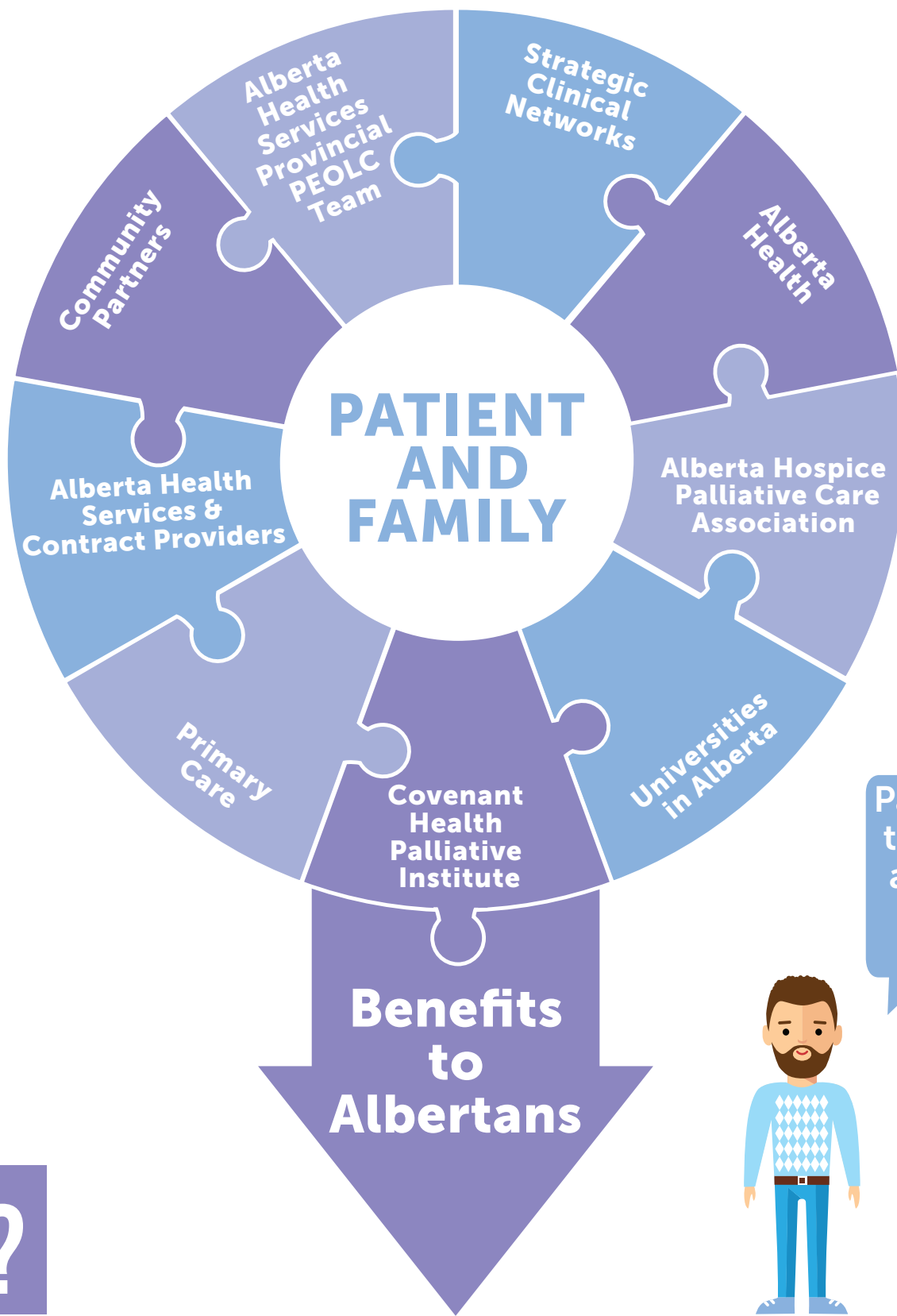


9/10 Albertans will need some PEOLC in their lifetime.

PEOLC partners work together so all Albertans receive the best possible care from wherever they choose to live.

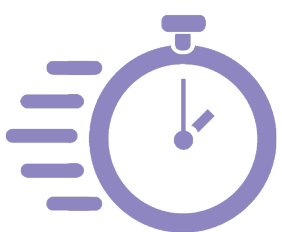


WHO IS INVOLVED?



Partners working together can do a lot more than when working alone!

WHAT ARE THE BENEFITS?



Meeting Patients & Families Needs Faster



Quality Care to Patient & Family



Better Access to Programs & Services



Awareness & Information



Planning Ahead Together



Better Use of Provincial Resources

To learn more about PEOLC in Alberta, go to: myhealth.alberta.ca/palliative-care OR conversationsmatter.ca

